



# Department of Transport

## Boating Guide North Metropolitan Marine Safety

**Contact details**  
 Department of Transport  
 Marine Safety Hotline: 1300 863 308  
 Email: marine.safety@transport.wa.gov.au  
 Website: www.transport.wa.gov.au/marine

**Hillarys Boat Harbour (weekdays only):**  
 Boat registration, charts sales, and pen bookings:  
 9448 7544

**Department of Fisheries**  
 Lancelin: 9655 1111  
 Hillarys: 9203 0111  
 Fishwatch: 1800 815 507  
 Website: www.fish.wa.gov.au

**Mindarie Keys Marina**  
 9305 1057

**Two Rocks Marina**  
 9561 1100

**Department of Environment and Conservation**  
 9334 0339

**WA Police Service**  
 Joondalup: 9400 0888  
 Water Police: 9442 8600  
 Ambulance  
 000 (or 112 mobile)

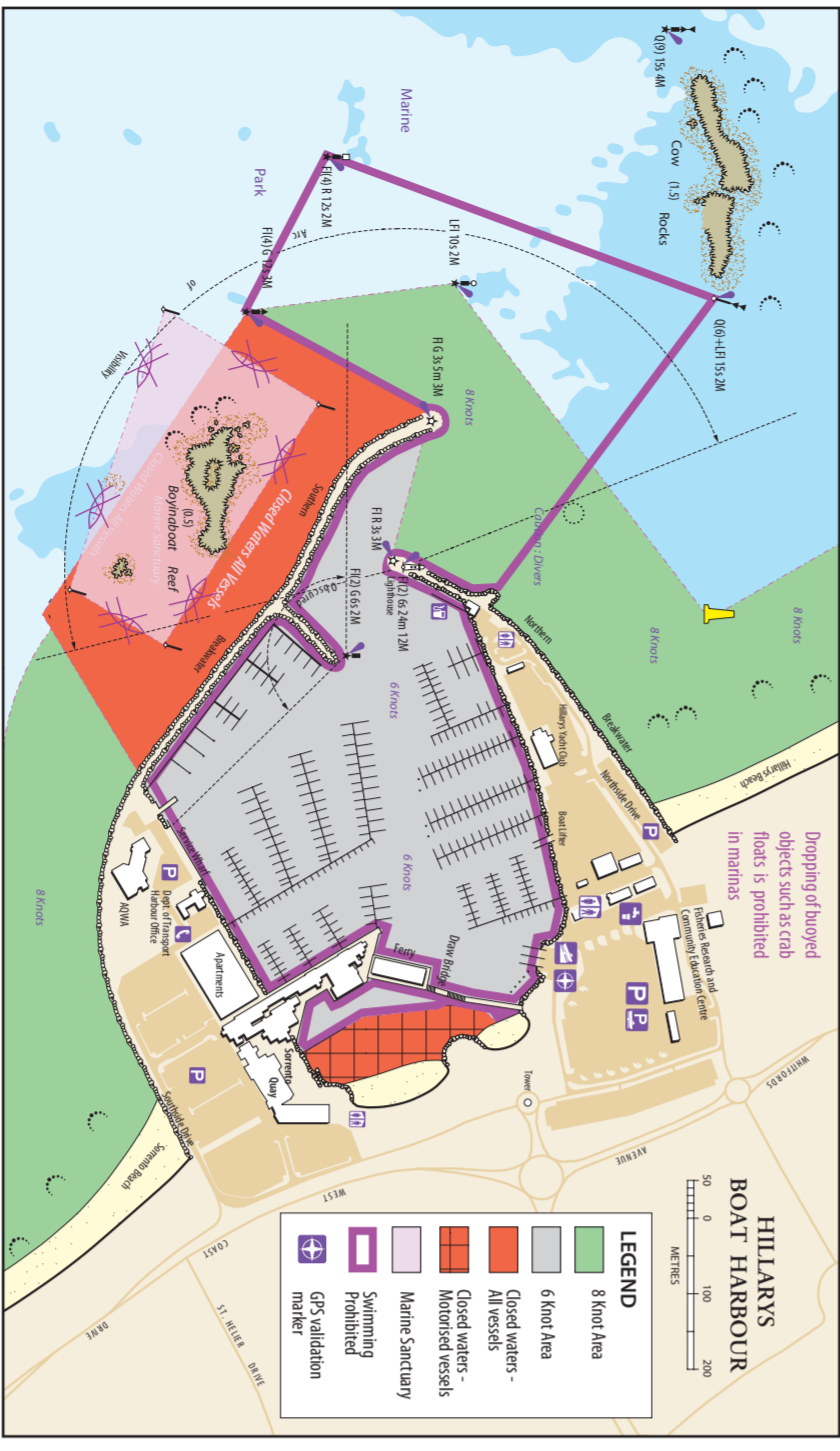
**Joondalup Health Campus**  
 9400 9400

**Marine Sea Search and Rescue**  
 Whitford's VSSRG: 9401 3757  
 Two Rocks VSSRG: 9561 5777

**Boating Weather Forecasts**  
 Boating weather: 1900 955 350  
 Website: www.bom.gov.au

The information contained in this publication is provided in good faith and believed to be accurate at time of publication. The State shall in no way be liable for any loss sustained or incurred by anyone relying on the information.  
 December 2012

	Over 5 Nautical miles from the mainland shore	2-5 Nautical miles from the mainland shore	0-2 Nautical miles from the mainland shore	Protected Waters: harbours, estuaries, inlets, bays, and lagoons. Low tides.
<b>Recreational Skipper's Ticket</b> The skipper of a recreational vessel, powered by a motor greater than 4.5kw (6 hp) must hold an RST.	✓	✓	✓	✓
<b>Bike Pump/Bailer</b> Bicycles and pumps must be carried in the hull of a bilge pump. Bicycles under 7 tonnes may carry a trailer in lieu of a bilge pump.	✓	✓	✓	✓
<b>Fire Extinguisher</b> Vessels with an inboard engine or carrying hydraulic hoisting or cooling appliances must carry an approved fire extinguisher.	✓	✓	✓	✓
<b>Anchor and line</b> An efficient anchor and line must be carried.	✓	✓	✓	✓
<b>Lifeline</b> A lifeline bearing the label PFD Type 1 or the Australian standard AS 1512 or AS 4758 - Level 100 (or higher) must be carried for every person onboard.	✓	✓	✓	✓
<b>Red and Orange Flares</b> At least two hand held red flares and two hand held orange flares must be carried. Two parachute flares may be carried in lieu of the two hand held red flares, and a smoke canister may be carried in lieu of the smoke flares.	✓	✓	✓	✓
<b>EPFB</b> A 400 MHz EPFB registered with ANSA bearing the standard AS/NZS 4280.1 must be carried if operating more than 2 miles from the mainland shore or more than 400 metres from an island located more than 2 miles from the mainland shore.	✓	✓	✓	✓
<b>Parachute Flares</b> A minimum of two parachute flares must be carried if operating more than 5 miles from the mainland shore or more than 1 mile from an island located more than 5 miles from the mainland shore. The radio can be 27 MHz, VHF or HF.	✓	✓	✓	✓
<b>Marine Radio</b> A marine radio must be carried if operating more than 5 miles from the mainland shore or more than 1 mile from an island located more than 5 miles from the mainland shore. The radio can be 27 MHz, VHF or HF.	✓	✓	✓	✓



**Hillarys Boat Harbour**  
 Unless special permission is obtained from Hillarys Boat Harbour management the following is prohibited:  
 • exceeding the 6 knot speed limit in the harbour limits;  
 • swimming or diving within the harbour and harbour entrance except within the designated boating prohibited area on the eastern shoreline;  
 • paddling canoes, kayaks and surf skis under jetties or buildings or within the boating prohibited areas;  
 • Note: Due to high demand on the limited waterway, club or group activities must be booked through the Department of Transport (DOT). Conditions of operation will apply.  
 • windsurfers, hard surfboards, personal water craft (PWC), freestyle, towing skiers or other buoyant equipment;  
 • cleaning fish and dumping of fish or rubbish into the harbour.

**Boat launching ramp courtesy**

- Plan your day and organise equipment, motors and mooring lines before leaving home.
- Utilise designated rigging and de-rigging areas to avoid impeding others launching and retrieving their vessels.
- Follow the directions indicated by signage and/or painted on the roadway.
- Utilise the correct lanes for launch and retrieval.
- Move quickly to the end of the jolly marking room for other people to launch and recover.
- Have patience with less experienced boaters.

**Caution ferries**

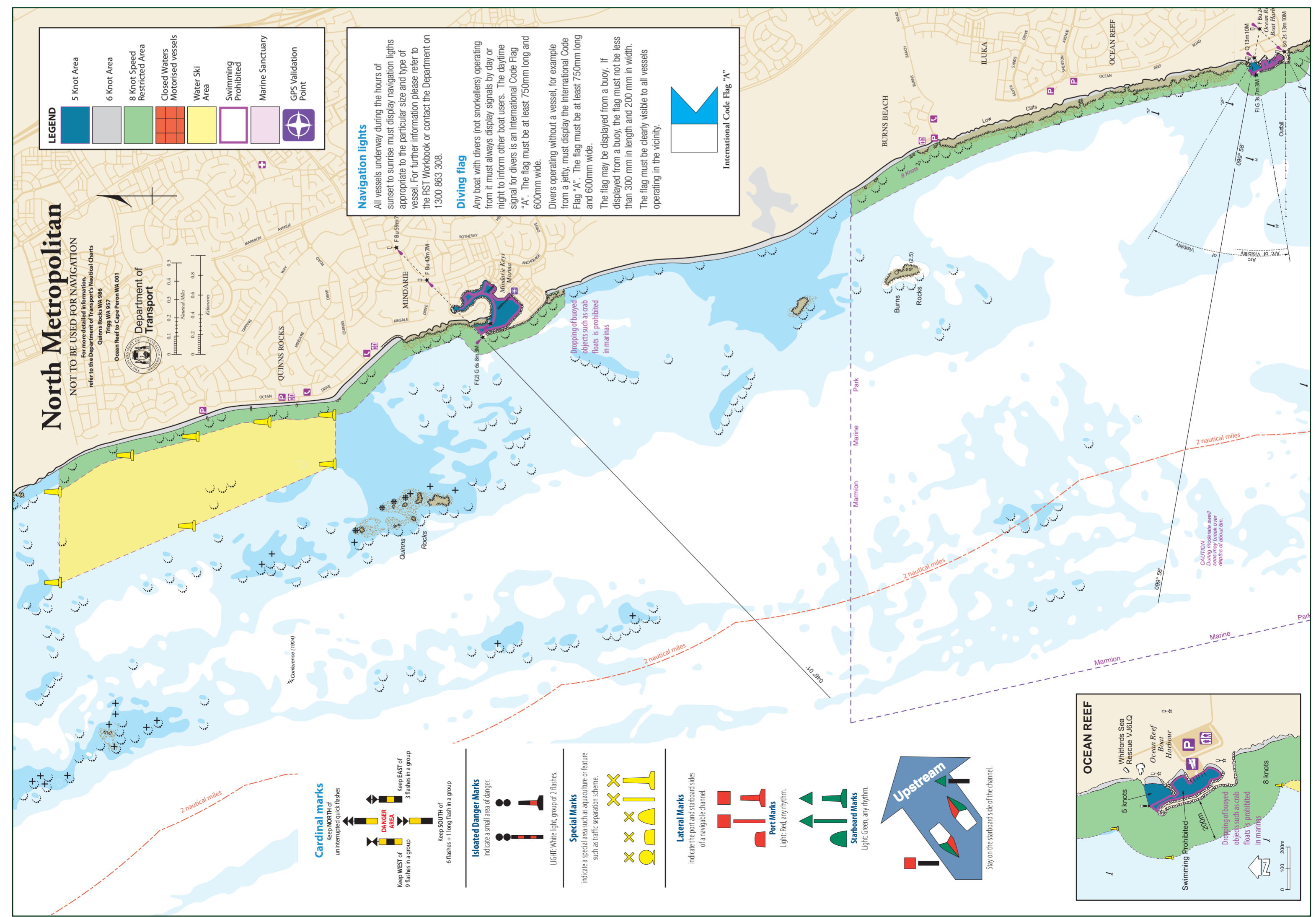
- Large commercial passenger carrying vessels operate from Hillarys Boat Harbour. In some weather conditions these vessels may be restricted in their ability to manoeuvre within the confines of narrow channels.
- Children should never be allowed to operate dinghies within the main navigation channel and without direct onboard adult supervision.
- Small vessels should be aware of their obligations not to impede the safe passage of these larger vessels and that they may not be clearly visible.
- Sailing vessels unable to navigate on the starboard side of the channel should engage mechanical propulsion.

**Reduce wash**

- Damage to vessels and floating pen jetties can be caused by a vessel's wash. Look behind occasionally to make sure that your boat is not creating too much wash. Please slow down if your wash is affecting other boats and property.

**Ocean Reef Boat Harbour**

- The entrance channel is subject to siltation, navigate with caution.
- Swimming is prohibited within the harbour and across the entrance channel.
- The 5 knot speed limit extends to the outer port hand mark.
- Responsibility for the harbour is vested with the City of Joondalup (9400 4000).



CAUTION  
 During moderate swell  
 the depth of the channel  
 may be less than the  
 depth of above dry

# North Metropolitan

NOT TO BE USED FOR NAVIGATION

For more detailed information, refer to the Department of Transport's Nautical Charts  
Quinns Rocks WA 986  
Trigg WA 957  
Ocean Reef to Cape Peron WA 001



Department of Transport

0 0.1 0.2 0.3 0.4 0.5  
Nautical Miles  
0 0.2 0.4 0.6 0.8  
Kilometres

Three Mile Reef

2 nautical miles

CAUTION - Heavy Swell

CAUTION - Submarine Cable

CAUTION - Heavy Swell

CAUTION - Submarine Cable

CAUTION - Heavy Swell

CAUTION - Submarine Cable

CAUTION - Heavy Swell

CAUTION - Submarine Cable

CAUTION - Heavy Swell

CAUTION - Submarine Cable

CAUTION - Heavy Swell

CAUTION - Submarine Cable

CAUTION - Heavy Swell

CAUTION - Submarine Cable

CAUTION - Heavy Swell

CAUTION - Submarine Cable

CAUTION - Heavy Swell

CAUTION - Submarine Cable

CAUTION - Heavy Swell

CAUTION - Submarine Cable

CAUTION - Heavy Swell

CAUTION - Submarine Cable

CAUTION - Heavy Swell

**LEGEND**

- 5 Knot Area
- 6 Knot Area
- 8 Knot Speed Restricted Area
- Closed Waters - All vessels
- Closed Waters - Motorised vessels
- Water Ski Area
- Swimming Prohibited
- Marine Sanctuary
- GPS Validation Point

**Cardinal marks**

Keep NORTH of uninterrupted quick flashes

Keep WEST of 9 flashes in a group

Keep EAST of 3 flashes in a group

Keep SOUTH of 6 flashes + 1 long flash in a group

**Isolated Danger Marks**

indicate a small area of danger.

LIGHT: White light, group of 2 flashes.

**Special Marks**

indicate a special area such as aquaculture or feature such as traffic separation scheme.

**Lateral Marks**

indicate the port and starboard sides of a navigable channel.

**Port Marks**  
Light: Red, any rhythm.

**Starboard Marks**  
Light: Green, any rhythm.

**Upstream**

Stay on the starboard side of the channel.

**Age requirements and restrictions for skippers**

A person in charge of a recreational vessel with a motor of 6hp or less is not required to hold a Recreational Skippers Ticket (RST).

Persons under 10 years may not drive a motor boat

A person in charge of a recreational vessel with a motor greater than 6hp is required to hold a RST.

Persons over 14 but under 16 years of age are restricted to operating during daylight hours at a speed less than 8 knots.

**Local radio frequencies**

27 MHz  
Emergency: CH 27.88 MHz  
Boat to boat: CH 27.96 MHz

VHF  
Emergency: CH 16  
Hillarys Port Control: CH 9 (Mon-Fri 09:00-16:30)  
Hillarys Patrol Vessel: CH 9, 16 or 27.88MHz  
Marine Sea Search and Rescue  
Whitfords VJ6LQ: VHF 16, CH 27.90 MHz  
Two Rocks VMR677: VHF 16, CH 27.91 MHz

**Personal water craft (PWC)**

**Age limits** - To operate a PWC at a speed greater than 8 knots you must be at least 16 years of age and hold a RST.

**Safety equipment**  
A Personal Flotation Device (PFD) for each person on board must be worn at all times:

- within 400 metres of the shore - either a PFD Type 1, 2, or 3;
- between 400 metres and 2 nm from shore - a PFD Type 1 only and inshore distress flare kit;
- between 2 and 5 nm - a PFD Type 1 only, inshore distress flare kit and an EPIRB;
- vessels of less than 3.75 metres in length are not permitted to operate more than 5 nm from the shore.

**Freestyling and wake jumping is prohibited in the north metropolitan area:**

- within any speed restricted area;
- within 30 metres of another PWC;
- within 50 metres of another vessel or person in the water.

**Water ski areas** - PWC may operate when towing a water skier. When towing a water skier all vessels are required to carry an observer of at least 14 years of age. Observers must also wear a PFD.

PWC not engaged in water skiing must at all times remain well clear of the take-off and landing area and any vessels engaged in water skiing.

**Wind and kite surfing**

**Caution**

With the onset of the sea breeze wind surfers and kite surfers congregate at many popular locations such as Mullaloo and Scarborough. In certain conditions these small, fast moving sailing vessels may be difficult to see and persons navigating along the north metropolitan coast need to maintain a proper lookout at all times and take appropriate action to avoid collisions.

**Prevention of collision**

All wind surfers and kite surfers have a duty of care to ensure their activities are conducted with regard to the prevailing conditions and circumstances and take appropriate action to avoid collisions.

**Safety equipment**

DoT suggest, wind surfers and kite surfers operating more than 400 metres from shore must be equipped with a PFD Type 1, 2 or 3 and an inshore distress flare kit.

**Boating prohibited areas**

**1 Boyinaboat Reef Dive Trail**

Located on the seaward side of Hillarys Boat Harbour adjacent to the Southern Breakwater and out to a distance of 240 metres offshore. This area was created for the safety of shore based snorkel and SCUBA divers. It incorporates a Marine Park Sanctuary Zone and is marked by spar buoys. All vessels are prohibited from entering or transiting through this area.

**2 Hillarys Boat Harbour Beach**

A line of markers clearly delineates this part of the eastern shoreline. All vessels, including those propelled by paddles and oars are prohibited from entering this area.

**Speed restriction areas**

**General 8 knots rules**

An 8 knot water speed applies to all vessels unless otherwise indicated:

- within 200 metres of shore from Port Beach to the northern boundary of the Marmion Marine Park (north of Burns Rocks);
- within 45 metres of the shore elsewhere;
- within 45 metres of a person in the water (this includes surfers);
- within 45 metres of an anchored or moored vessel;
- Within 15 metres of a vessel underway.

**Obstruction of channels and leading lines**

**Craypots** - The setting of craypots or other fishing gear on leading lines, adjacent to navigation marks, in navigation channels, and boat harbours pose a very real danger to safe navigation and puts lives at risk. Offences may result in removal of equipment and prosecution.

**Vessels** - Anchoring vessels on leading lines or in channels may impede the safe passage of other vessels and must be avoided unless you are broken down or in distress.

**Vessel Overtaking Another**  
Every overtaking vessel gives way (this includes sailing vessels)

**Power Vessels Meeting Head On**  
Each vessel alters course to starboard

**Power Vessels Meeting**  
Vessel having the other to starboard gives right of way

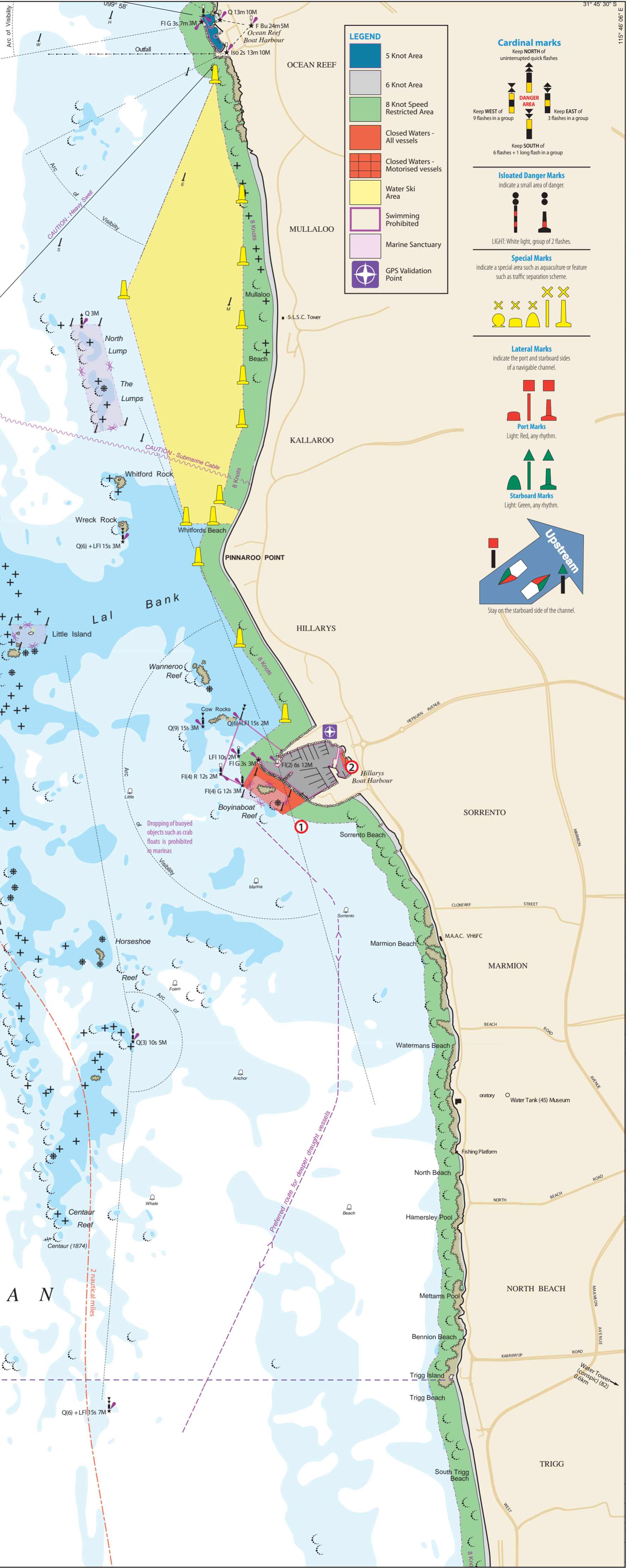
**Power Meeting Sailing Vessel**  
Power gives way to sail except when sailing vessel is overtaking

I N D I A N

M A R M I O N

O C E A N

Marmion Marine Park



31° 45' 30" S  
115° 46' 06" E