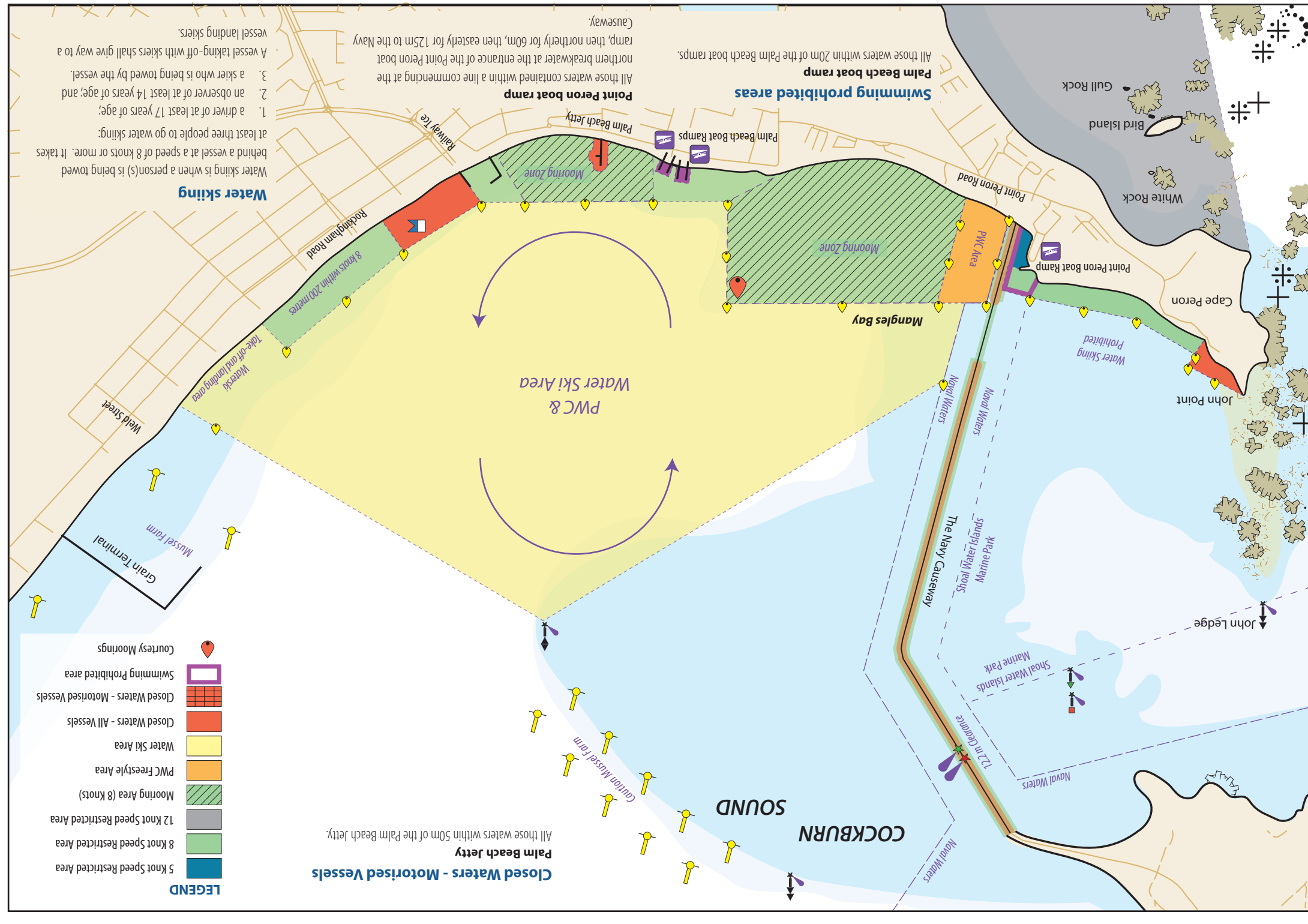
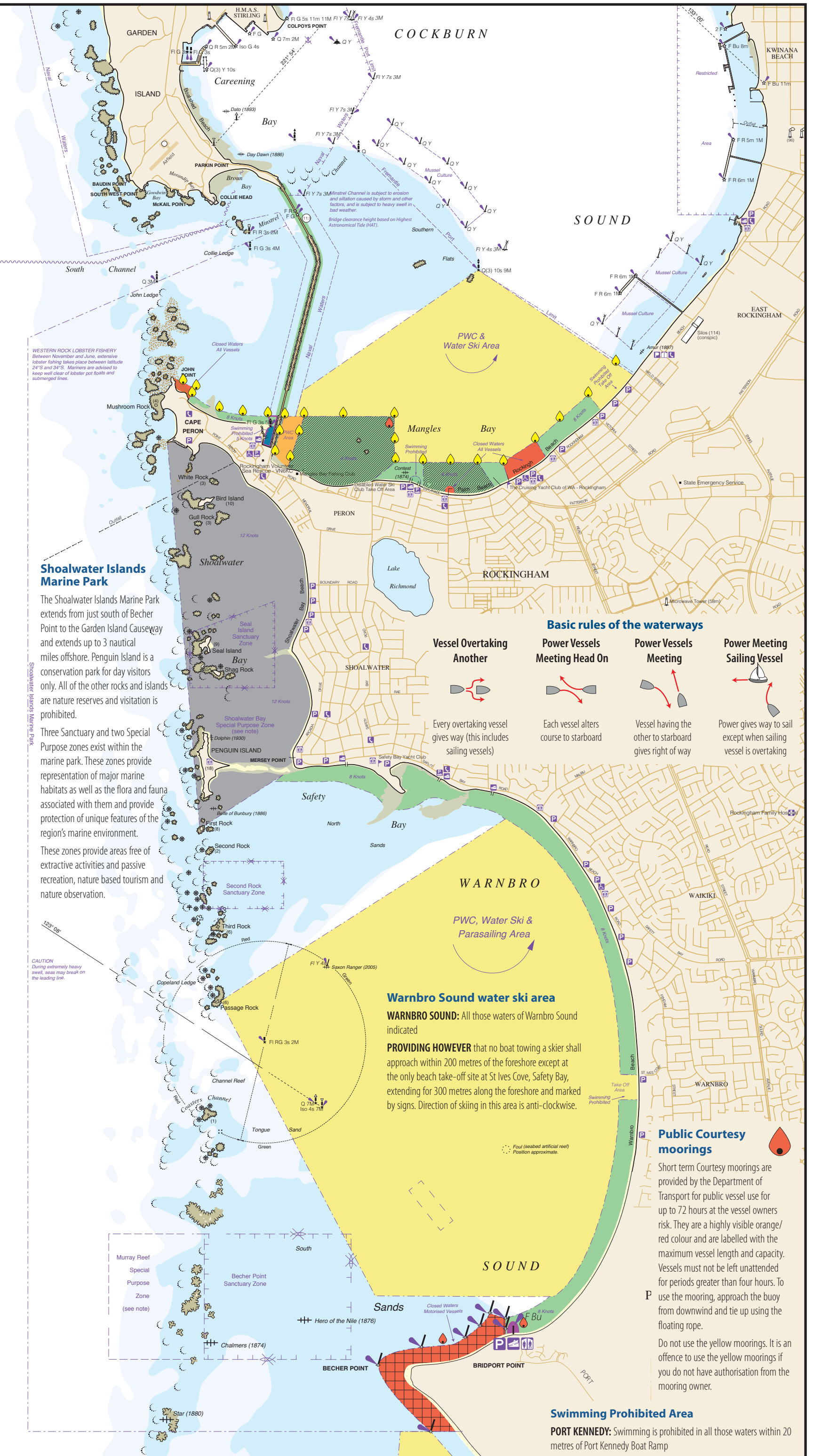
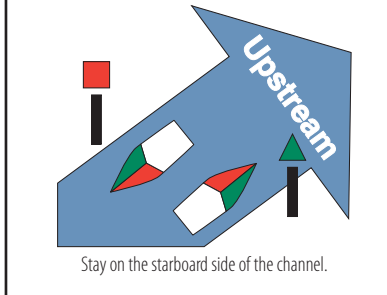
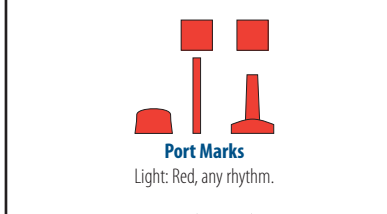
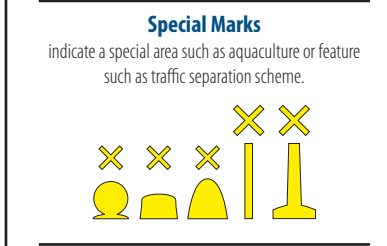
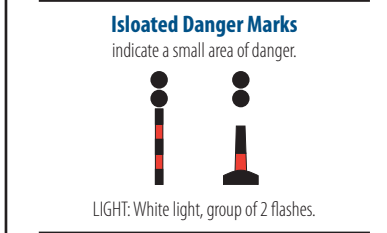
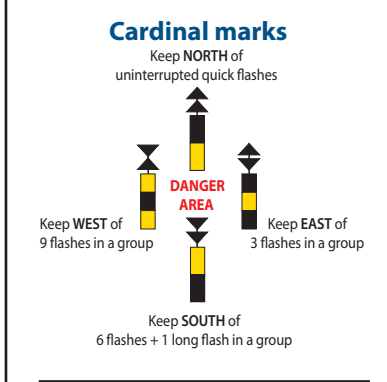


- LEGEND**
- 5 Knot Speed Restricted Area
 - 8 Knot Speed Restricted Area
 - 12 Knot Speed Restricted Area
 - Mooring Area (8 Knots)
 - PWC Freestyle Area
 - Water Ski Area
 - Closed Waters - All Vessels
 - Closed Waters - Motorised Vessels
 - Swimming Prohibited area
 - Courtesy Moorings



Safety Equipment

Protected Waters lakes, rivers, estuaries except Lake Argyle	0-2 Nautical Miles from the mainland shore	2-5 Nautical Miles from the mainland shore	Over 5 Nautical Miles from the mainland shore
Recreational Skipper's Ticket The skipper of a recreational vessel, powered by a motor greater than 4.5kw (6 hp) must hold an RST.	✓	✓	✓
Bilge Pump/Bailer All vessels must carry a bilge pump. Vessels under 7 metres may carry a bailer in lieu of a bilge pump.	✓	✓	✓
Fire Extinguisher Vessels with an inboard engine or carrying hydrocarbon consuming appliances must carry an approved fire extinguisher.	✓	✓	✓
Anchor and line An efficient anchor and line must be carried.	—	✓	✓
Lifejacket A lifejacket bearing the label PFD Type 1 or the Australian standard AS 1512 or AS 4758 - Level 100 (or higher) must be carried for every person onboard.	—	✓	✓
Red and Orange Flares At least two hand held red flares and two hand held orange flares must be carried. Two parachute flares may be carried in lieu of the two hand held red flares and a smoke canister may be carried in lieu of the smoke flares.	—	✓	✓
EPIRB A 406 MHz EPIRB registered with AMSA bearing the standard AS/NZS 4280.1 must be carried if proceeding more than 2 miles from the mainland shore or more than 400 metres from an island located more than 2 miles from the mainland shore.	—	—	✓
Parachute Flares A minimum of two parachute flares must be carried if operating more than 5 miles from the mainland shore or more than 1 mile from an island located more than 5 miles from the mainland shore.	—	—	✓
Marine Radio A marine radio must be carried if operating more than 5 miles from the mainland shore or more than 1 mile from an island located more than 5 miles from the mainland shore. The radio can be 27 MHz, VHF or HF.	—	—	✓

Contact Details

Department of Transport
Marine Safety Hotline..... 1300 863 308
After Hours call Water Police 9442 8600
Website..... www.transport.wa.gov.au/imagine

Police
 Rockingham 9528 8000
 Water Police 9442 8600

Department of Fisheries
 Rockingham 9527 3699
 Fishwatch 1800 815 507

Marine Sea Search and Rescue
VN6KC Rockingham 9528 2222
 Hours: 6am to 10pm daily
VH6CL Cockburn 9410 1544

Radio Watch 27 mHz VHF
 Emergency ch. 27.88 16
 Local (VN6KC) ch 27.90 16
 Boat to boat ch 27.96 72, 73 and 77
 For non emergency rescues call 18004RESCUE

Hospital
 Rockingham 9527 2777
 Ambulance 9334 1234
 000 (or mobile 012)

Yacht Clubs
 Safety Bay Yacht Club 9527 1946
 The Cruising Yacht Club 9527 5468

City of Rockingham Council 9528 0333

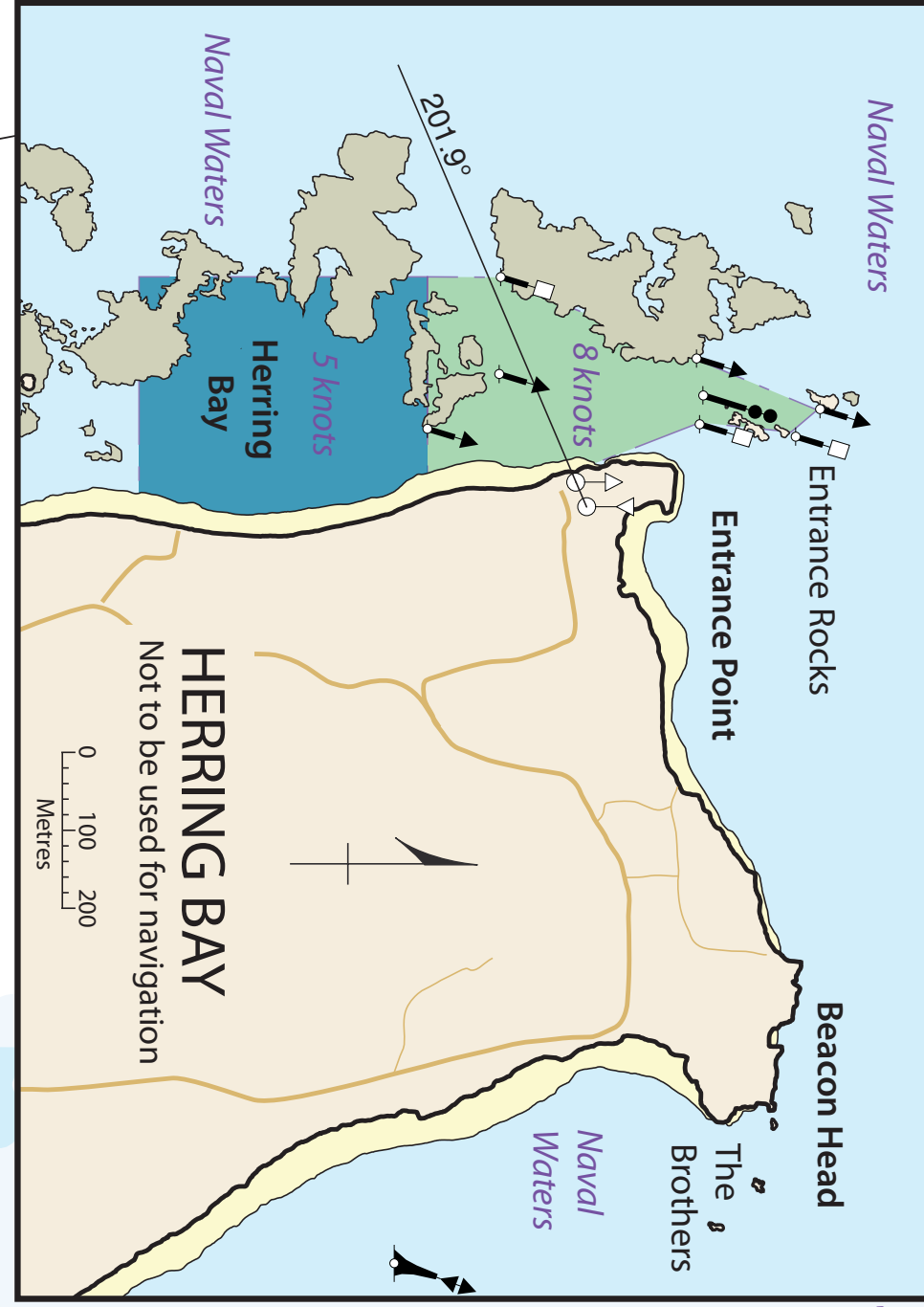
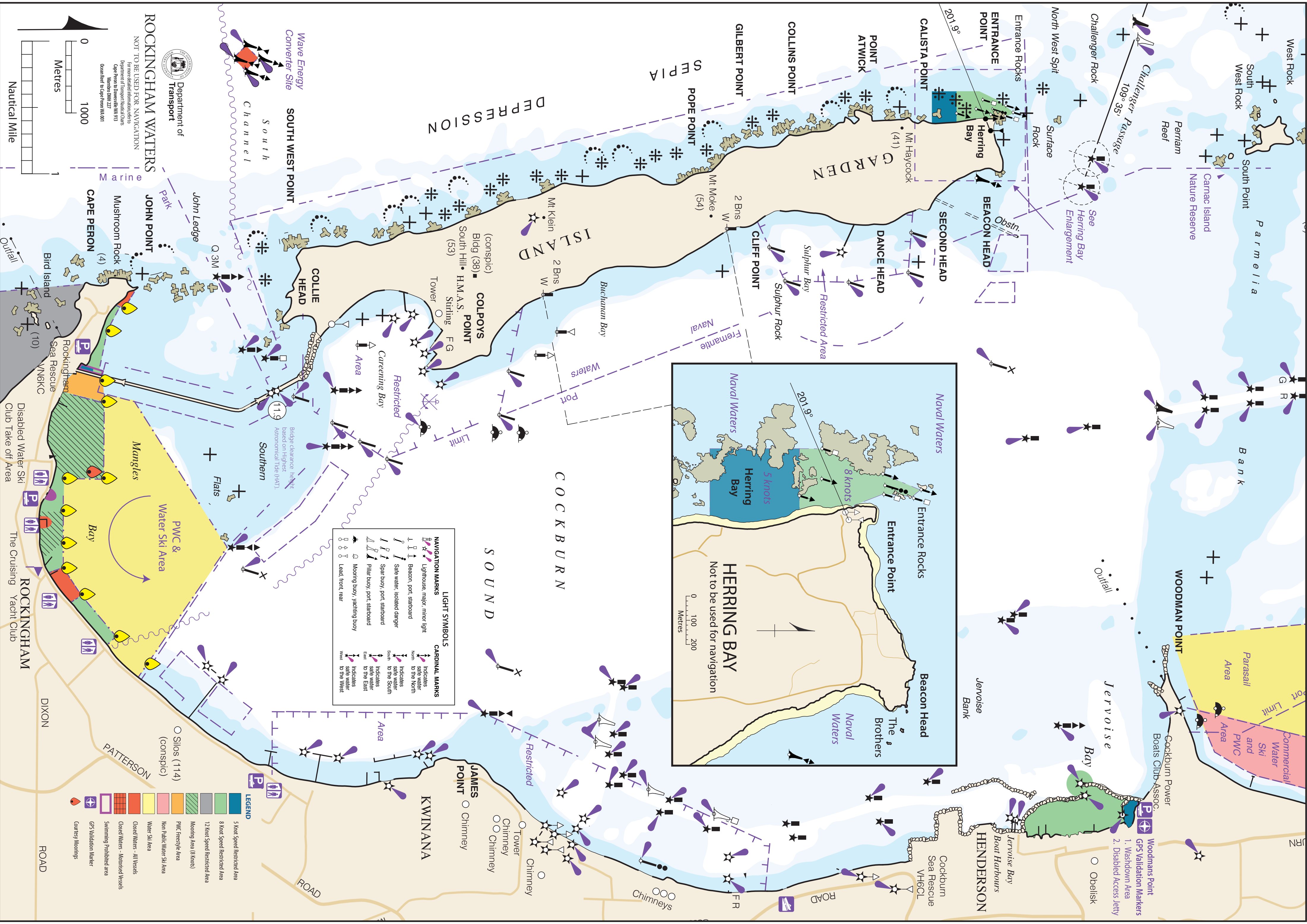
Rangers 9528 0333

Department of Environment and Conservation
 9432 5111
 A/H 9483 6462

Boating Weather Forecast
Boating Weather 1900 955 350
Website www.bom.gov.au



YOU'RE THE SKIPPER
YOU'RE RESPONSIBLE



LIGHT SYMBOLS	
	Lighthouse major, minor light
	Beacon, port, starboard
	Spar buoy, port, starboard
	Pillar buoy, port, starboard
	Mooring buoy, yachting buoy
	Lead front, rear

CARDINAL MARKS	
	Indicates safe water to the North
	Indicates safe water to the South
	Indicates safe water to the East
	Indicates safe water to the West

Department of Transport
 NOT TO BE USED FOR NAVIGATION
 For more detailed information refer to Department of Transport nautical charts
 Cape Fern to Dover Strait 513
 Western Strait 222
 Overlaid to OpenStreetMap data



Department of Transport
 NOT TO BE USED FOR NAVIGATION
 For more detailed information refer to Department of Transport nautical charts
 Cape Fern to Dover Strait 513
 Western Strait 222
 Overlaid to OpenStreetMap data

LEGEND

	5 Knot Speed Restricted Area
	8 Knot Speed Restricted Area
	12 Knot Speed Restricted Area
	Mooring Area (8 knots)
	PWC Freestyle Area
	Non Public Water Ski Area
	Water Ski Area
	Closed Waters - All Vessels
	Closed Waters - Monitored Vessels
	Swimming Prohibited area
	GPS Validation Marker
	Courtesy Mooring

Rockingham Waters
 Department of Transport
 NOT TO BE USED FOR NAVIGATION
 For more detailed information refer to Department of Transport nautical charts
 Cape Fern to Dover Strait 513
 Western Strait 222
 Overlaid to OpenStreetMap data