

MEDICAL SONITA MEDIC SURGICAL SUPPLIES

ESTABLISHED OVER 150 YEARS
FROM 1859

ACCOSON

Accuracy starts in the name

SPHYGMOMANOMETERS



| www.sonitamedic.com.au |

■ EMAIL: customers@sonitamedic.com.au

■ PHONE: 1800 SONITA (766 482)

■ MOBILE: 0423 178 332

SYDNEY :

Suite 242 / 60
Walker St, North Sydney,
NSW 2060

MELBOURNE :

Suite 121 / 358 Clarendon St,
South Melbourne,
VIC 3205

BRISBANE :

524 Old Bay Road
Burrpangary East,
QLD 4505

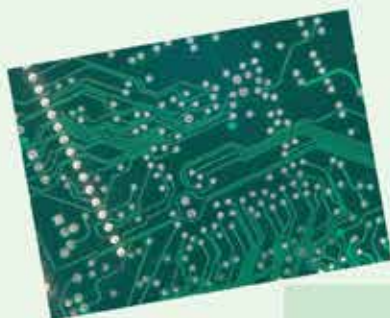
PERTH

Suite 76 Ground Floor
50, St Georges Terrace,
Perth WA 6000

greenlight 300™

ACCOSON

Accuracy starts in the name



accuracy
without mercury

None of the fragility of aneroid devices



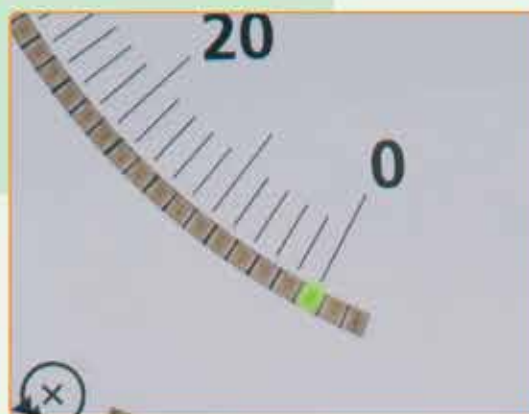
greenlight 300 model
Code 0702

confidence
without mercury



A manual device recommended by the
British Hypertension Society

self calibration
without mercury



Self-calibration to zero
each time the device is switched on
ensures reliable accuracy

SONITA MEDIC
MEDICAL SURGICAL
SUPPLIES

PHONE: 1800 SONITA (766 482)

EMAIL: customers@sonitamedic.com.au

OFFICE's in:

. SYDNEY

. MELBOURNE

MOBILE:

WEB: www.sonitamedic.com.au

. BRISBANE

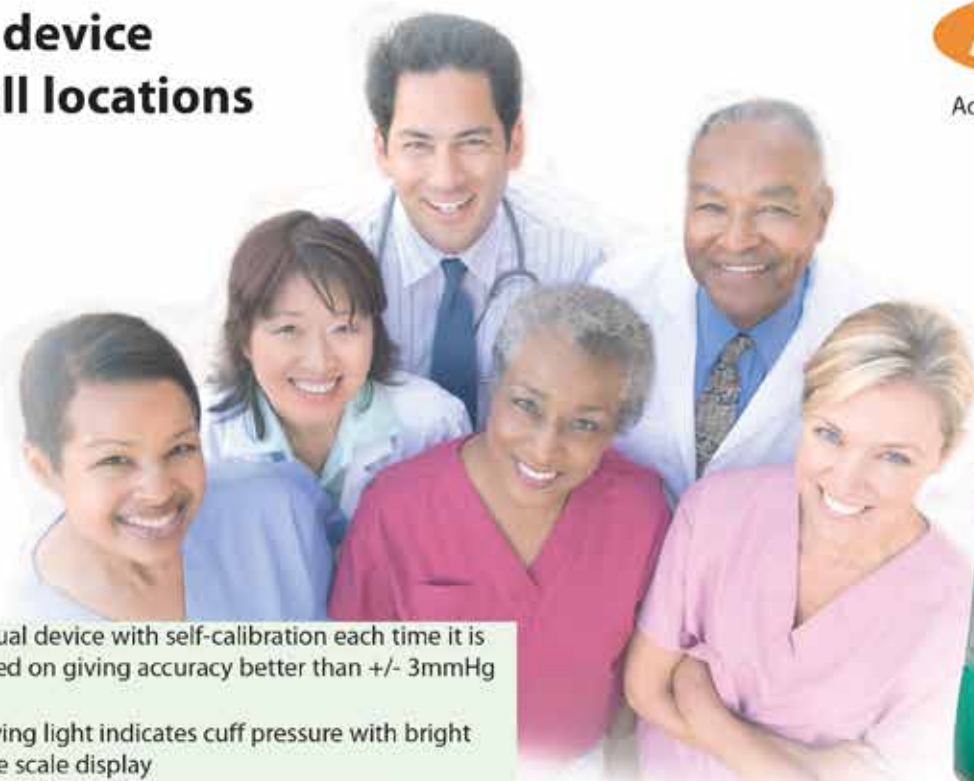
. PERTH

0423 178 332

One device for all locations

ACCOSON

Accuracy starts in the name



A manual device with self-calibration each time it is switched on giving accuracy better than $\pm 3\text{mmHg}$

- Moving light indicates cuff pressure with bright large scale display
- None of the fragility of an aneroid gauge
- Frequent calibration checks no longer required
- Cuff deflation rate displayed to aid good technique
- Range 0 - 300mmHg
- Designed within the NHS to provide an accurate alternative to mercury
- Wall mounting and Stand kits available
- Latex free inflation system and coiled tubing
- Recommended manual device of the British Hypertension Society (www.bhsoc.org)
- Full details and videos on www.greenlight300.com

Stand Model The greenlight 300 converts to a mobile stand model when fitted with the Stand Conversion Kit Code 1774 consisting of:

- A large container for the cuff and tubing on which the greenlight 300 is fitted. The instrument is set at an angle for easy viewing.
- A mounting stem with adjustable height, with five castors to give mobility and stability.



Wall model The greenlight 300 converts to a wall mounted instrument when fitted with the Wall Conversion Kit Code 1772 consisting of:

- A swivel mounting bracket which allows the instrument to be turned in two directions. This gives easy viewing of the display particularly when the instrument is placed between two beds.
- Cuff is stored behind the instrument.

Wall model conversion kit Code 1772
Stand model conversion kit Code 1774
Carrying case with zipper Code 1775



"The Accoson Greenlight 300, the first non-automated mercury-free blood pressure measurement device to pass the International Protocol for blood pressure measuring devices in adults".

John W. Graves, Mary Tibor, Blaithead Murtagh, Lois Klein and Sheldon G. Sheps Blood Pressure Monitoring 2004; 9:13-17

6 inch Aneroid Sphygmomanometers

ACCOSON

Accuracy starts in the name

Wall Model
Code : 0342



Desk Model
Code: 0332



Stand model
Code: 0362

- Made in UK and guaranteed accurate to ISO 81060-1
- Large diameter white dial
- Wall model has swivel mounting bracket
- Desk model has convenient carrying handle
- Cuff is stored behind the gauge
- Range 0-300mmHg
- Supplied with latex free inflation system with coiled tubing

- Adjustable height with inclined gauge
- Stable base with five castors
- Cuff stored in box with grab handle behind gauge

six⁰⁰ series of Aneroid Sphygmomanometers

ACCOSON
Accuracy starts in the name

The new **six⁰⁰** series is a premium range of aneroid sphygmomanometers offering the clinician the highest quality at an affordable price. A modern solution for all locations with innovative and practical features.

- Fitted with innovative ambidex cuff
- Made in England and guaranteed accurate to ISO 81060-1
- Range 0 - 300 mmHg, with the scale calibrations starting at zero
- Clear white face with fine red pointer gives pin point visibility
- Smooth lines for easy cleaning without awkward areas
- Designed to withstand double full scale overpressure
- Five year calibration warranty

Optional Wall mounting
velcro® plate
Code: 1660



Wall model
Code: 0642A



Desk Model
Code: 0632A



Stand model
Code: 0662A

- Spacious storage for latex free inflation system
- Desk model with practical handle and scratch free feet
- Wall model with mounts for fixed or swivel operation
- Hole free wall mounting available using optional velcro® plate
- Mobile stand model with adjustable height and inclined gauge
- Special mounts for rail and other systems on request

Portable hand model Aneroid Sphygmomanometers

ACCOSON

Accuracy starts in the name

Duplex Aneroid model
Code: 0322

- Made in UK and guaranteed accurate to ISO 81060-1
- One-handed use, with thumb and fingertip control
- Lightweight diecast metal case
- Supplied in soft zipper case
- Range 0 - 300mmHg
- Latex free inflation system
- Supplied with adult size velcro cuff, with coiled tubing



Limpet Aneroid model
Code: 0292A (Straight tube ambidex cuff)
Code: 0302 (Coiled tube velcro cuff)
Code: 0292SA (With set of four ambidex cuffs)

- Made in UK and guaranteed accurate to ISO 81060-1
- One-handed use, suitable for both right and left hands
- Supplied in soft zipper case
- Range 0 - 300mmHg
- Supplied with adult cuff, bulb and either straight or coiled tubing, or with a set of four cuffs

MEDICAL

■ PHONE:

1800 SONITA (766 482)

■ MOBILE:

0423 178 332

SONITA MEDIC SURGICAL

■ EMAIL: customers@sonitamedic.com.au

■ WEB: www.sonitamedic.com.au

SUPPLIES

■ OFFICE's in:

• SYDNEY

• MELBOURNE

• BRISBANE

• PERTH

Portable Aneroid Sphygmomanometers

ACCOSON

Accuracy starts in the name



Pocket Aneroid model
Code: 0312A

- Made in UK and guaranteed accurate to ISO 81060-1
- Lightweight diecast metal case
- Cuff/pocket clip on back of case
- Range 0-300mmHg
- Supplied in soft zipper case
- Supplied with adult size ambidex cuff

- Made in UK and guaranteed accurate to ISO 81060-1
- Designed for self use
- Cuff fitted with built-in stethoscope
- Cuff designed for easy fitting using one hand
- Gauge designed for use with either right or left hand
- Supplied in soft zipper case
- Complete with latex free inflation system, instructions and printed record form

Combine model
Code: 0400 Self Test



Mercury Sphygmomanometer

ACCOSON

Accuracy starts in the name

**Dekamet not for sale in
the European Union or Australia**

**Dekamet
Code 0125**

- Made in UK and guaranteed accurate to ISO 81060-1
- Lightweight diecast case
- Shatterproof plastic manometer tube
- Mercury reservoir isolation valve
- Steel hinge pivots
- Range 0-300mmHg
- Supplied with latex free adult velcro cuff and bulb



Pressure Infusion Cuff

Code 0205 0.5 litre size

Code 0210 1.0 litre size



The Accoson Pressure Infusion Cuff is an inflatable device to aid IV infusion delivery speed. It features a large scale accurate pressure gauge, simple press valve for rapid deflation and a strong fine mesh front for excellent visibility. Fine adjustment of air pressure is available by using the valve on the pressure gauge. All components are available as spare parts.

The Accoson **ambidex** one-piece cuff has been developed to provide a blood pressure cuff which is easy to use, clean, multi-purpose and cost-effective.

- The cuff has a unique soft edge which replaces the weld found on other cuffs, allowing the **ambidex** cuff to be applied to either the left or right arm with equal comfort for the patient.
- The air inlet tube is positioned in the centre of the cuff face so that it is always out of the way of the patient's arm, whether the left or right arm is chosen. This means that there are no tubes to interfere with the stethoscope during manual measurement, and the tubes are tidy when a patient monitor is used.
- Constructed in soft yet robust fabric, which has antimicrobial treatment, these one-piece cuffs come in a full range of sizes which are based on the recommendations of the British Hypertension Society (www.bhs.org)
- Each cuff carries a RANGE marker and ARTERY position indicator, both printed so that they can be read when using the cuff on either arm.
- The Accoson **ambidex** bladderless blood pressure cuff can be used as a regular cuff, or for single patient use, and carries a white panel on which a patient's name or the cuff location details can be recorded.



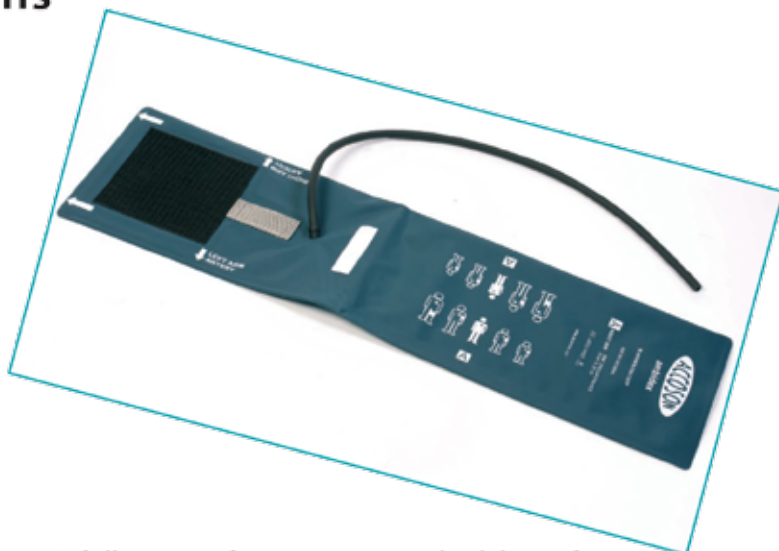
unique soft edge - tube exit on cuff face - latex-free - antimicrobial - easily cleaned - full range of sizes



Unique soft edge to cuff



Tube exits from outside face of cuff when used on both left and right arms



A full range of sizes, antimicrobial, latex free and a panel for identification



Single and double tube styles all with size range marked

- Unique ambidex comfort edge
- Cuff can be used on either left or right arm
- Inlet tube positioned in the centre of the cuff face frees space for the stethoscope and keeps tubing on the outside of the arm
- **CUFF RANGE** and **ARTERY** position indicator can be read when cuff is on either arm
- Full range of sizes based on BHS recommendations
- Latex-free throughout
- Panel for single patient or cuff identification if required
- Single and double tube option, with a full range of tube connectors. See table on www.accoson.com
- Tab for aneroid gauge or for use as a tube tidy
- Easily cleaned; antimicrobial treated and full details on www.accoson.com

Cuff size	Range	Code Single Tube	Code Double Tube
INFANT	13 - 19 cm	1296	1286
CHILD	18 - 25 cm	1294	1284
ADULT	24 - 35 cm	1290	1280
LARGE ADULT	34 - 46 cm	1293	1283
OUTSIZE ADULT or THIGH	45 - 60 cm	1298	1288

click 300

ACCOSON

Accuracy starts in the name

Innovative control valve for blood pressure cuffs

(Patented)

The new **click 300** is an innovative and patented blood pressure cuff deflation valve which enables the user to set a rate of cuff deflation without continual adjustment as the cuff pressure falls during the blood pressure measurement.

The valve is controlled by a simple finger wheel, with an intuitive click feature. As the wheel is rotated each click adjusts the deflation rate, and that rate is maintained automatically by the inner mechanism of the valve. This avoids the continuous adjustment required by conventional air release valves as the cuff pressure falls.

The deflation rate may be changed at any time, typically after the point of systolic pressure and before the point of diastolic pressure, to avoid prolonged inflation of the cuff. Any new rate selected will be maintained by the **click 300** until readjustment.

The **click 300** makes it easy to use the British Hypertension Society recommended rate of cuff deflation of 2 to 3 mmHg/sec, for a manual blood pressure measurement (www.bhs.org). Further research* has also shown that this slow rate of cuff deflation is necessary for accurate manual blood pressure measurement.

(*Zheng D, Moore JN, Mieke S, Murray A. How important is the recommended slow cuff pressure deflation rate for blood pressure measurement? *Annals of Biomedical Engineering* 2011;39:2584-2591. (DOI: 10.1007/s10439-011-0347-9))

Code 1512



- Maintains rate of cuff deflation without continuous adjustment
- Can be used on any manual device with a double tube cuff
- Supplied with latex free inflation bulb and tube connector
- Suitable for any size or style of blood pressure cuff
- Easy to use and simplifies the manual technique
- Made in England, UK Patent GB2438371, and internationals granted

Blood Pressure Cuffs

Standard Velcro Cuff and Bladders

The standard range of Accoson blood pressure cuffs features a separate latex free bladder with either a single tube or double tubes. Each cuff is marked with a RANGE-FINDER label to aid the selection of the correct size for the patient, and a label to indicate correct placement over the brachial artery.



PRODUCT CODES

SPHYGMOMANOMETERS & PRESSURE INFUSION CUFFS

CODES ARE FOR THE DEVICE COMPLETE WITH THE TYPE OF CUFF SHOWN INCLUDED

DEKAMET model	Code	FREESTYLE DESK model	Code	FREESTYLE WALL model	Code	FREESTYLE STAND model	Code
Adult Bandage Cuff	0121	Adult Bandage Cuff	0010	Adult Bandage Cuff	0020	Adult Bandage Cuff	0040
Adult Velcro Cuff	0125	Adult Velcro Cuff	0012	Adult Velcro Cuff	0022	Adult Velcro Cuff	0042
WR Bandage Cuff	0127	WR Bandage Cuff	0017	WR Bandage Cuff	0027	WR Bandage Cuff	0047
WR Velcro Cuff	0129	WR Velcro Cuff	0019	WR Velcro Cuff	0029	WR Velcro Cuff	0049
Red/Blue Adult cuff	0125R,B						
LIMPET HAND model straight tube	Code	LIMPET HAND model coiled tube	Code	POCKET model	Code	DUPLEX model	Code
Adult Bandage Cuff	0290	Adult Bandage Cuff	0300	Adult Bandage Cuff	0310	Adult Bandage Cuff	0320
Adult Velcro Cuff	0292	Adult Velcro Cuff	0302	Adult Velcro Cuff	0312	Adult Velcro Cuff	0322
WR Bandage Cuff	0297	WR Bandage Cuff	0307	WR Bandage Cuff	0317	WR Bandage Cuff	0327
WR Velcro Cuff	0299	WR Velcro Cuff	0309	WR Velcro Cuff	0319	WR Velcro Cuff	0329
Gauge only	0374	Gauge only	0374	Gauge only	0370	Gauge only	0371
Four velcro cuff set	0292S						
6" ANEROID DESK model	Code	6" ANEROID WALL model	Code	6" ANEROID ANAESTHETIC	Code	6" ANEROID STAND model	Code
Adult Bandage Cuff	0330	Adult Bandage Cuff	0340	Adult Bandage Cuff	0350	Adult Bandage Cuff	0360
Adult Velcro Cuff	0332	Adult Velcro Cuff	0342	Adult Velcro Cuff	0352	Adult Velcro Cuff	0362
WR Bandage Cuff	0337	WR Bandage Cuff	0347	WR Bandage Cuff	0357	WR Bandage Cuff	0367
WR Velcro Cuff	0339	WR Velcro Cuff	0349	WR Velcro Cuff	0359	WR Velcro Cuff	0369
Gauge only	0375	Gauge only	0372	Gauge only	0373	Gauge only	0376
COMBINE with stethoscope	Code	PRESSURE INFUSION Cuff	Code	PRESSURE INFUSION Cuff	Code	PRESSURE INFUSION Cuff	Code
Adult Velcro Cuff	0400	0.5 Litre	0205	1 Litre	0210	Gauge only	0230
greenlight 300 electronic display	Code						
Adult Bandage Cuff	0700	Wall model kit	1772				
Adult Velcro Cuff	0702	Stand model kit	1774				
WR Bandage Cuff	0707	Zipper carrying case	1775				
WR Velcro Cuff	0709						
Gauge only	0770						
Sphyg testing kit	0701						

SPARE VELCRO CUFFS

Each Accoson Pre-measured velcro cuff is marked with the upper and lower limits of limb circumference to which the cuff is suited. Cuffs with double tube bags are suitable for all mercury, 6" aneroid, pocket aneroid and greenlight models, and those with single tubes for Duplex and Limpet models.

	Inflation Bag Size	Max Limb Circumference	Velcro Cuff Set inc Bulb & Valve Code	Velcro Cuff with Double tube bag Code	Velcro Cuff with Single tube bag Code
Adult	9" x 5" (228mm x 127mm)	343mm	1521	1321	1311
*WR Alternative Adult	14" x 5" (354mm x 127mm)	420mm	1522	1322	1312
Outsize Adult	15" x 7" (381mm x 178mm)	482mm	1523	1323	1313
Child	7.5" x 4" (191mm x 102mm)	266mm	1524	1324	1314
Young Child	6" x 3" (152mm x 76mm)	218mm	1525	1325	1315
Infant	4" x 2" (102mm x 51mm)	173mm	1526	1326	1316
Newborn Baby	4" x 1" (102mm x 25mm)	122mm	1527	1327	1317
Thigh	20" x 7" (508mm x 178mm)	609mm	1528	1328	1318
New size Child	(180mm x 80mm)	260mm	1529	1329	1319
New Size Small Child	(130mm x 40mm)	170mm	1530	1330	1320
Adult with coiled tube	9" x 5" (228mm x 127mm)	343mm			1331

MEDICAL

PHONE:

1800 SONITA (766 482)

MOBILE:

0423 178 332

SONITA MEDIC

SURGICAL

EMAIL: customers@sonitamedic.com.au

WEB: www.sonitamedic.com.au

SUPPLIES

OFFICE's in:

. SYDNEY

. MELBOURNE

. BRISBANE

. PERTH

		Inflation Bag Size	Max Limb Circumference	Velcro Cuff Only	Inflation Bag Double tube	Inflation Bag Single tube
				Code	Code	Code
Standard Adult	9" x 5"	(228mm x 127mm)	343mm	1301	1021	1011
*WR Alternative Adult	14" x 5"	(354mm x 127mm)	420mm	1302	1022	1012
Outsize Adult	15" x 7"	(381mm x 178mm)	482mm	1303	1023	1013
Child	7.5" x 4"	(191mm x 102mm)	266mm	1304	1024	1014
Young Child	6" x 3"	(152mm x 76mm)	218mm	1305	1025	1015
Infant	4" x 2"	(102mm x 51mm)	173mm	1306	1026	1016
Newborn Baby	4" x 1"	(102mm x 25mm)	122mm	1307	1027	1017
Thigh	20" x 7"	(508mm x 178mm)	609mm	1308	1028	1018
New size Child		(180mm x 80mm)	260mm	1309	1029	1019
New Size Small Child		(130mm x 40mm)	170mm	1310	1030	1020
Adult with coiled tube	9" x 5"	(228mm x 127mm)	343mm	1301	-	1031

	Code
COMBINE CUFF complete with inflation Bag and Stethoscope	1492
COMBINE CUFF with inflation Bag (less stethoscope)	1491
COMBINE CUFF only	1401
COMBINE INFLATION BAG only	1091
DYNOMANOMETER (Hand Grip Test Adaptor) with single tube bag	1141
DYNOMANOMETER (Hand Grip Test Adaptor) with double tube bag	1142
CBC ELASTIC TOURNIQUET WITH BUCKLE	1398
14" TOURNIQUET WITH VELCRO CLOSURE	1399

SPARE BANDAGE CUFFS

		Inflation Bag Size	Max Limb Circumference	Bandage Cuff with Double tube bag	Bandage Cuff with Single tube bag
				Code	Code
Standard Adult	9" x 5"	(228mm x 127mm)	343mm	1121	1111
*WR Alternative Adult	14" x 5"	(354mm x 127mm)	420mm	1122	1112
Outsize Adult	15" x 7"	(381mm x 178mm)	482mm	1123	1113
Child	7.5" x 4"	(191mm x 102mm)	266mm	1124	1114
Young Child	6" x 3"	(152mm x 76mm)	218mm	1125	1115
Infant	4" x 2"	(102mm x 51mm)	173mm	1126	1116
Newborn Baby	4" x 1"	(102mm x 25mm)	122mm	1127	1117
Thigh	20" x 7"	(508mm x 178mm)	609mm	1128	1118
New size Child		(180mm x 80mm)	260mm	1129	1119
New Size Small Child		(130mm x 40mm)	170mm	1130	1120
Adult with coiled tube	9" x 5"	(228mm x 127mm)	343mm	-	1131

		Inflation Bag Size	Max Limb Circumference	Bandage Cuff Only	Inflation Bag Double tube	Inflation Bag Single tube
				Code	Code	Code
Standard Adult	9" x 5"	(228mm x 127mm)	343mm	1101	1021	1011
*WR Alternative Adult	14" x 5"	(354mm x 127mm)	420mm	1102	1022	1012
Outsize Adult	15" x 7"	(381mm x 178mm)	482mm	1103	1023	1013
Child	7.5" x 4"	(191mm x 102mm)	266mm	1104	1024	1014
Young Child	6" x 3"	(152mm x 76mm)	218mm	1105	1025	1015
Infant	4" x 2"	(102mm x 51mm)	173mm	1106	1026	1016
Newborn Baby	4" x 1"	(102mm x 25mm)	122mm	1107	1027	1017
Thigh	20" x 7"	(508mm x 178mm)	609mm	1108	1028	1018
New size Child		(180mm x 80mm)	260mm	1109	1029	1019
New Size Small Child		(130mm x 40mm)	170mm	1110	1030	1020
Adult with coiled tube	9" x 5"	(228mm x 127mm)	343mm	1101	-	1031
<i>*Wide Range (WR)</i>						

SINGLET Bladderless CUFFS

Suitable for either regular, single patient or disposable use. Available with a variety of tube connectors to suit popular devices

	<u>Inflation Area Size</u>	<u>Cuff Range</u>	<u>Single tube Velcro Cuff</u>	<u>Double tube Velcro Cuff</u>	<u>Singlet Double tube Cuff Set with Bulb & Valve (Single Patient Use)</u>
			<u>Code</u>	<u>Code</u>	<u>Code</u>
Adult	280mm x 125mm	253mm to 343mm	1290	1280	1580
Large Adult	310mm x 155mm	330mm to 470mm	1293	1283	1583
Child	210mm x 100mm	180mm to 260mm	1294	1284	1584
Infant	150mm x 60mm	100mm to 190mm	1296	1286	1586
Newborn	120mm x 47mm	60mm to 110mm	1297	1287	1587
Thigh	420mm x 200mm	460mm to 660mm	1298	1288	1588

REPLACEMENT PARTS FOR MAINTENANCE

<u>Description</u>	<u>Code</u>	<u>Description</u>	<u>Code</u>
CONTROL VALVE	1500	MERCURY RESERVOIR COMPLETE	1830
INFLATION BULB	1501	MERCURY RESERVOIR TOP	1834
INFLATION BULB AND CONTROL VALVE	1502	MERCURY RESERVOIR SCREW (per ten)	1835
		CARTRIDGE VALVE for control valve	1701
FEMALE TUBING CONNECTOR	1503	BACK VALVE for inflation bulb	1702
MALE TUBING CONNECTOR	1504		
PAIR OF TUBING CONNECTORS	1505	LONG COILED TUBE for Wall and Stand models	1703
		SHORT COILED TUBE for Desk models	1704
PLASTIC MANOMETER TUBE 260mm	1508	RUBBER TUBING (per metre)	1705
PLASTIC MANOMETER TUBE 300mm	1509	RUBBER TUBING 42cm length for reservoir	1706
PLASTIC MANOMETER TUBE (stand model)	1510		
		FREESTYLE ADHESIVE SCALE	1850
PRINTED SCALE 260mm	1800	FREESTYLE TUBE HOLDER	1851
PRINTED SCALE 300mm	1801	FREESTYLE TUBE SPACER	1852
TUBE SHOE BRACKET	1802	FREESTYLE TUBE PLUG	1853
COILED SPRING FOR SHOE BRACKET	1803	FREESTYLE TUBE PLUG WASHER (per ten)	1854
		FREESTYLE TUBE SPRING	1855
DEKAMET Mk3 CASE AND LID	1810	FREESTYLE RESERVOIR GASKET	1856
DEKAMET Mk3 CASE ONLY	1811	F'STYLE RESERVOIR SCREW & WASHER (per ten)	1857
DEKAMET Mk3 LID ONLY	1812		
		DUPLEX VALVE NIPPLE & CARTRIDGE VALVE	1900
"Y" PIECE TUBING CONNECTOR	1813	DUPLEX VALVE NIPPLE WASHERS (per ten)	1902
		DUPLEX SPOON BRACKET	1904
		DUPLEX SPOON BRACKET SCREW (per ten)	1905
SIDE HINGES FOR Mk2 CASE & LIDS (pair)	1814	DUPLEX RELEASE SCREW	1906
SCREWS AND WASHERS FOR HINGES (per ten)	1815	DUPLEX COILED SPRING FOR RELEASE SCREW	1907
HOSPITAL MODEL CATCH AND SCREWS (set)	1816	DUPLEX VALVE PIN FOR RELEASE SCREW	1908
METPAK / DEKAMET CATCH SPRING Mk2	1817	DUPLEX TUBING CONNECTOR	1909
METPAK / DEKAMET CATCH BUTTON Mk2	1818		
METPAK / DEKAMET CATCH SPRING Mk3	1837	POUCH CASE for Duplex & Limpet models	1910
		POUCH CASE for Combine model	1911
METPAK / DEKAMET CATCH BUTTON Mk3	1838		
LID SUPPORT SPRING	1819	2" ANEROID PLASTIC FACE	1912
RUBBER FEET FOR METAL CASES	1820	6" ANEROID PLASTIC FACE	1913
		2" ANEROID POINTER	1914
MERCURY (500 grams)	1821	6" ANEROID POINTER	1915
MERCURY REFILL 260mm	1822	2" ANEROID BEZEL for Duplex and Pocket model	1916
MERCURY REFILL 300mm	1823	6" ANEROID BEZEL	1917
		2" ANEROID BEZEL for limpet model	1929
TUBE CLEANERS (per ten)	1824		
		1.0 LITRE PRESSURE INFUSION CUFF ONLY	1923
PVC TUBE WASHERS (per ten)	1825	0.5 LITRE PRESSURE INFUSION CUFF ONLY	1924
CHAMOIS WASHERS (per ten)	1826	SWITCH VALVE FOR PRESSURE INFUSION CUFF	1922
YELLOW CHAMOIS WASHERS (per ten)	1827		
LEATHER WASHERS (per ten)	1828	NUTS FOR INFUSION CUFF GAUGE (per ten)	1925
"O" RING WASHERS (per ten)	1829	TUBING SET FOR PRESSURE INFUSION CUFF	1918

MEDICAL

■ PHONE:

1800 SONITA (766 482)

■ MOBILE:

0423 178 332

SONITA MEDIC SURGICAL

■ EMAIL: customers@sonitamedic.com.au

■ WEB: www.sonitamedic.com.au

SUPPLIES

■ OFFICE's in:

. SYDNEY

. MELBOURNE

. BRISBANE

. PERTH

MEDICAL SONITA MEDIC SURGICAL SUPPLIES

| www.sonitamedic.com.au |

■ EMAIL: customers@sonitamedic.com.au

■ PHONE: 1800 SONITA (766 482)

■ MOBILE: 0423 178 332

SYDNEY :

Suite 242 / 60 Walker St,
North Sydney, NSW 2060

MELBOURNE :

Suite 121 / 358 Clarendon St,
South Melbourne,
VIC 3205

BRISBANE :

524 Old Bay Road
Burrpengary East,
QLD 4505

PERTH

Suite 76 Ground Floor
50, St Georges Terrace,
Perth WA 6000