

ONLY ONE

NEW & IMPROVED



Face-Cradle®
Prone Support System

- Simple set-up, "no waiting"
- Fully adjustable cushion set accommodates most adult head sizes
- Greater patient stability
- Greater visibility of patient's eyes & ET tube



***"When vision matters...
...you have control"***



Fully Adjustable

*The Face-Cradle is for use in prone position surgeries
offering the clinician **greater visibility** of the patient's face.*

WA Distributor:

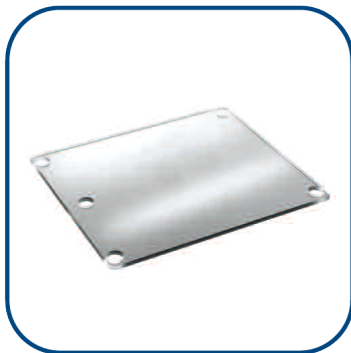
ONLY ONE

NEW & IMPROVED



Face-Cradle®
Prone Support System

The Face-Cradle System consists of a mirror, a base and a soft, contoured foam set.



Mirror



Base



Foam Set

Specifications:

Mirror Weight	488 grams	Mirror Material	Polycarbonate
Base Weight	785 grams	Base Material	Polycarbonate
Foam Set Weight	242 grams	Foam Set Material	Polyurethane
		Base Hardware Material	Stainless Steel
Adjustment Range, Height	26.4 mm - approx. 1"		
Adjustment Range, Horizontal	40.0 mm - approx. 1.5"		

Ordering Information:

10-520-00	Prone Base and Mirror Set
10-520-01	Replacement Prone Mirror
10-520-02	Replacement Prone Base
10-520-03	Prone Contoured Foam Cushions (2/set, 5 sets per box)

Accessories

Catheter Mounts

DM-3504

Description

Superset straight catheter mounts

Packaged

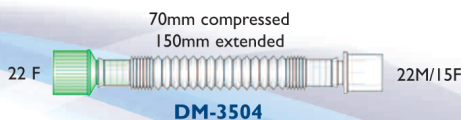
50/Box

Flexible Catheter Mounts

DM-3511

Flexible straight catheter mounts

50/Box



WA Distributor:

MEDICAL

■ PHONE: 1800 SONITA(766 482)

■ MOBILE: 0423 178 332

■ FAX: 08 9446 2637

SONITA MEDIC

SURGICAL

■ EMAIL: customers@sonitamedic.com.au

■ WEB: www.sonitamedic.com.au

SUPPLIES

■ OFFICE ADDRESS: Suite 76, Ground Floor 50 St. Georges Terrace, Perth WA 6000